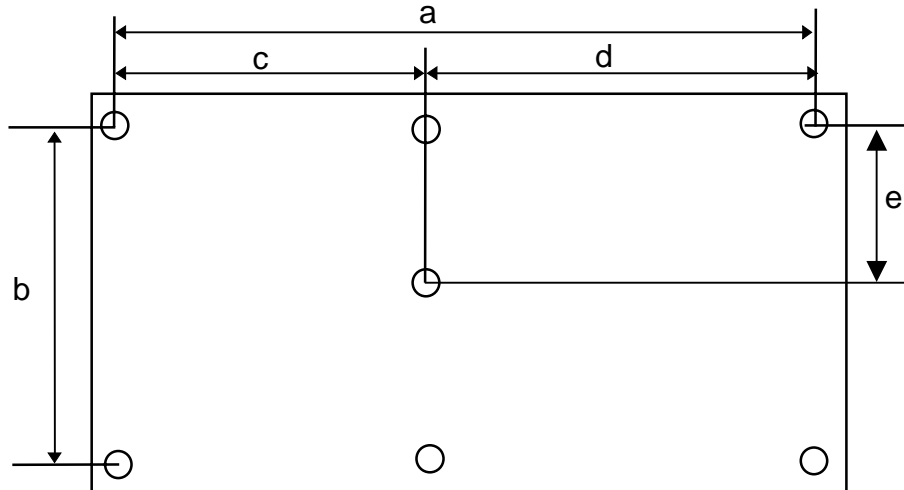


Mounting Holes Location for TRi range of PLCs



All dimensions are in inches (x 25.4 to convert to mm).
 Mounting holes are of diameter = 0.125 inches (about 3mm)

Super PLCs	a	b	c	d	e
1. Nano-10	2.445"	2.850"	-	-	-
2. FMD88-10 / T100MD-888+	4.575"	4.200"	-	-	-
3. FMD1616-10 T100MD-1616+ EXP4040, EXP1616R	5.175"	4.200"	-	-	-
4. F1616-BA (5 holes)	6.800"	4.200"	3.985"	2.815"	2.200"
5. F2424 (5 holes)	6.800"	4.200"	4.020"	2.780"	2.220"
6. T100MD-2424+ (5 holes)	6.800"	4.200"	4.400"	2.405"	1.950"
7. T100MX-3224R+	6.950"	4.700"	3.925"	3.025"	-
8. T100MX-4832+	8.000"	4.700"	3.925"	4.075"	-

Classic PLCs	a	b	c	d	e
1. E10-npn	1.850"	1.875"	-	-	-
2. E10-Relay	2.775"	1.975"	-	-	-
3. T20H/T22H-npn	3.075"	3.275"	-	-	-
4. T28H-Relay	6.275"	3.425"	-	-	-
5. T44H-npn/T44H-pnp	5.500"	4.200"	-	-	-
6. T40H-Relay	7.325"	3.700"	3.300"	4.025"	-
7. T64H-Relay (5 holes)	7.175"	4.500"	3.700"	3.475"	1.675"